

Crisis Management Seminar

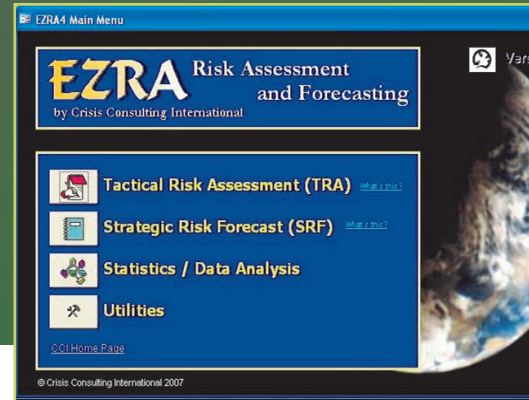
Training faith-based leaders to prepare for and manage international crisis events



PRESENTED BY



"Your wealth of experience is priceless." – CMS Participant



Client Testimonials

"What you taught really instilled confidence in me."

"The course information was highly relevant and the way it was communicated was very effective."

"At our first crisis team meeting, I followed your training principles verbatim. I am so grateful for your training."

"Your group has been steadfast and impressive." – FBI agent

"I am at a loss for adequate words to express our deep and heartfelt thanks to you for running together with us through this marathon of an ordeal. I would hate to think where we would be if it was not for you. You gave yourself to us in ways we will never forget; bringing the expertise we so woefully lacked."

– CEO of a mission organization victimized by hostage-taking

REGISTER: www.cricon.org

QUESTIONS: info@cricon.org

:: The need

Leaders of mission organizations, outreach pastors and faith-based sending agencies of all types are facing an increasingly unstable and dangerous world, and an alarming trend of targeting of Christians by terrorist groups. As a leader-sender, are you exercising the best possible stewardship of your workers' lives and ministries?

Includes **free**
EZRA risk assessment software*

*\$500.00 retail value

:: The course

CCI's Crisis Management Seminar is a 3-day course that prepares faith-based leaders to conduct risk assessments, develop policies and contingency plans, and to manage crises and emergencies ranging from natural disasters to terrorist attacks and hostage-taking. This course utilizes case studies and group exercises extensively.

:: The trainers

The staff and trainers of CCI are all committed believers, deeply involved in kingdom work both locally and globally. They individually and collectively possess an unmatched combination of professional training, expertise, and real-world 'on the ground' experience working with faith-based organizations around the globe.



:: The organization

For more than 25 years, CCI has been the premier provider of security and crisis management services to the Christian missionary, humanitarian and church sending communities. With an outstanding record of success, CCI assists these communities with kidnapping and hostage resolution, crisis response, risk and security assessments, site surveys, policy development and contingency planning, crisis management training and consultation, event security, and field security training.

"Rescue those being led away to death." –Proverbs

